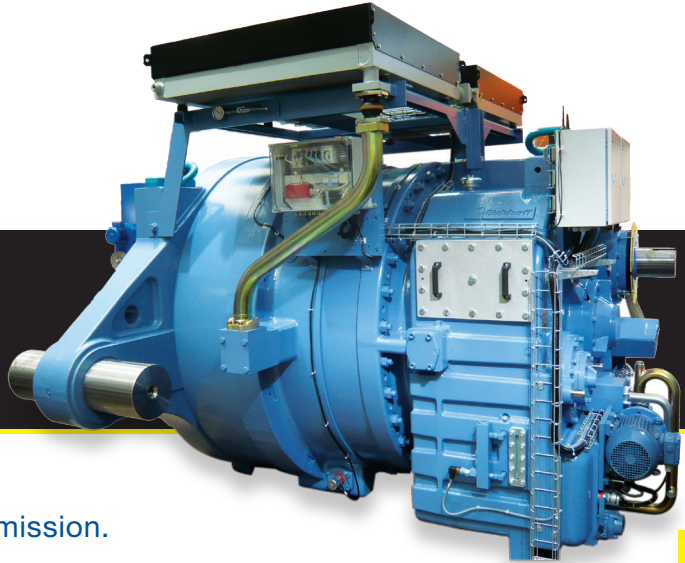


Why you should get to know Eickhoff for Gearbox Services.



MANUFACTURING

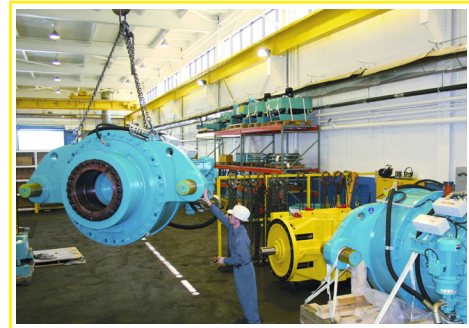
gearboxes with extremely low noise emission.

For nearly 150 years Eickhoff has been engineering and manufacturing the worlds highest quality gearing. Using innovative and proprietary technologies, our gearing and gear components, from foundry castings to machining to heat treatment, are subject to stringent testing procedures within an ISO certified facility. For 20 years we have operated a division dedicated to wind power gearbox design, production and service, and a new plant dedicated to manufacturing wind power gearboxes began operating two years ago.

Eickhoff 3+MW gearbox equipped with optional stationary E-GOMS.

INSPECTION. REPAIR. REBUILDS.

- Up-Tower Services including condition assessment by
 - visual inspection
 - boroscope inspection
 - structure borne sound measurement (portable or stationary)
 - E-GOMS (Eickhoff Gearbox Online Monitoring System)
 - Vibrational diagnostics developed by Eickhoff and certified by AZT (Allianz Zentrum Für Technik) in 2004 including full integration of the drive train with rotor bearing, gearbox bearings, gears and generator bearings.
- Bearing and gear exchanges
- Workshop Services include complete engineering and engineering upgrades for Eickhoff gearboxes. Dismantling and refurbishing or replacement of all necessary components, reassembly and full load testing are all performed by highly trained and experienced technicians.



New Eickhoff 1.5MW gearboxes are in stock in Pittsburgh, PA and available for immediate delivery.

Gear Up with Eickhoff!

Eickhoff Corporation
200 Park West Drive
Pittsburgh, PA 15275
T: 412.788.1400
F: 412/788/4100
E: windsales@eickhoff.us
eickhoffwindpower.com

Empowering Energy Producers™